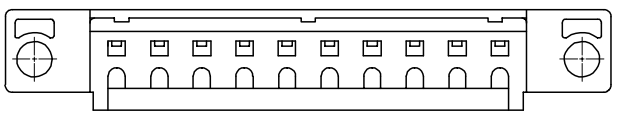
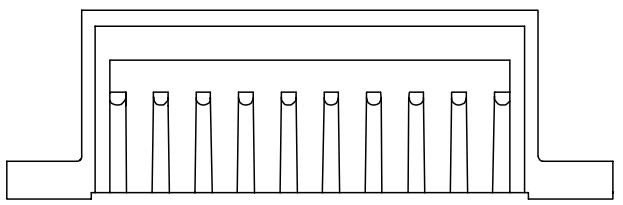
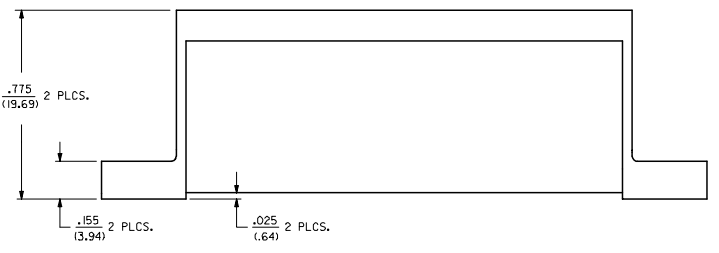
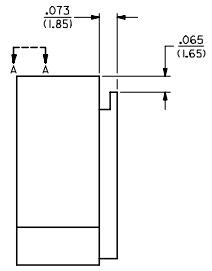
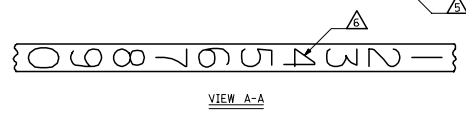
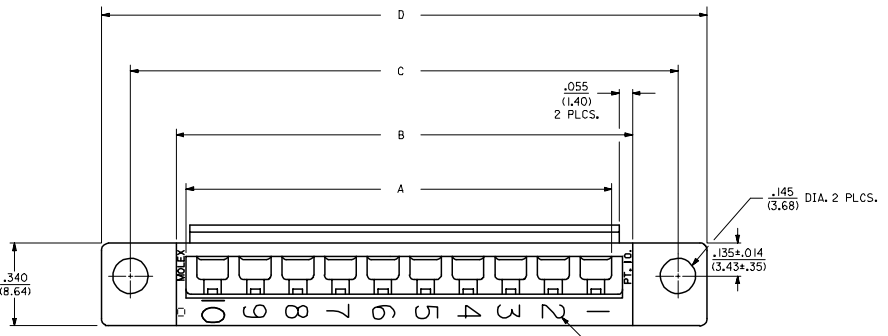


20 19 18 17 16 15 14 13 12 11 10 9 8 7 6 5 4 3 2 1

M L K J I H G F E D C B A

- NOTES:**
- △ THESE HOUSINGS ARE FOR USE WITH THE 1457-• TERMINALS AND MAY BE SUBDIVIDED BY USING THE 1461-K KEY.
  - △ THE HOUSINGS ARE ONLY AVAILABLE IN 5, 10, 15, AND 20 CIRCUIT SIZES.
  - △ PRODUCT SPECIFICATION PS 50-36 APPLIES.
  - △ THESE HOUSINGS CONFORM TO U.L. AND C.S.A. REQUIREMENTS.
  - △ .060/(1.52) HIGH RAISED NUMERALS.
  - △ .125/(3.18) HIGH RECESSED NUMERALS ON A MATTE BACKGROUND.
  - △ .09/(2.3) HIGH INK STAMPED NUMERALS.
- B. PACKAGE PER PK-1461-100.



4	01
3	0
2	01
1	0
SHT REV	

<b>MODIFY CORE OUTS</b> EC NO: UCP2005-2756 DRWNS: BARRA 2005/09/29 CHK: BARKER 2005/10/18 APPR: SHILLER 2005/10/12	QUALITY SYMBOLS	GENERAL TOLERANCES (UNLESS SPECIFIED)	DIMENSION STYLE	SCALE	DESIGN UNITS	THIRD ANGLE PROJECTION
	▽=0 ▽=0	mm INCH 4 PLACES ± --- ± --- 3 PLACES ± --- ± .010 2 PLACES ± 0.25 ± .014 1 PLACE ± 0.35 ± --- ANGULAR ± 1/2°	IN/MM DRAWN BY DATE AFG 9/1/02/18 CHECKED BY DATE RHR 9/1/02/18 APPROVED BY DATE GWF 9/1/02/18	4:1	INCH	TITLE HOUSING, COMMONING [.025/(.64) OFFSET]
	DRAFT WHERE APPLICABLE MUST REMAIN WITHIN DIMENSIONS	SEE TABLE	MATERIAL NO.	DOCUMENT NO.	MOLEX INCORPORATED	
	SIZE D	THIS DRAWING CONTAINS INFORMATION THAT IS PROPRIETARY TO MOLEX INCORPORATED AND SHOULD NOT BE USED WITHOUT WRITTEN PERMISSION				

19 18 17 16 15 14 13 12 11 10 9 8 7 6 5 4 3 2 1

M L K J I H G F E D C B A

PART NO.	ENG. NO.	NO. CKTS.	DIM. A	DIM. B	DIM. C	DIM. D
07-01-7201	1461-20	20	3.50 (88.9)	3.63 (92.2)	4.00 (101.6)	4.24 (107.7)
07-01-7151	1461-15	15	2.62 (66.5)	2.75 (69.9)	3.13 (79.5)	3.37 (85.6)
07-01-7101	1461-10	10	1.750 (44.45)	1.875 (47.63)	2.250 (57.15)	2.49 (63.2)
07-01-7051	1461-5	5	.875 (22.23)	1.000 (25.40)	1.375 (34.93)	1.615 (41.02)

SPECIAL NUMBERED HOUSINGS CHART						
PART NO.	ENG. NO.	NO. CKTS.	CIRCUIT NUMERALS			
07-01-7102	1461-10-1	10	11 THRU 20			
07-01-7103	1461-10-2	10	21 THRU 30			
07-01-7104	1461-10-3	10	31 THRU 40			
07-01-7152	1461-15-1	15	16 THRU 30			
07-01-7153	1461-15-2	15	31 THRU 45			
07-01-7154	1461-15-3	15	46 THRU 60			
07-01-7202	1461-20-1	20	21 THRU 40			
07-01-7203	1461-20-2	20	41 THRU 60			
07-01-7204	1461-20-3	20	61 THRU 80			

INK STAMPED HOUSINGS								
BEFORE INK STAMP	AFTER INK STAMP	BEFORE INK STAMP	AFTER INK STAMP	NO. CKTS.	DIM. A	DIM. B	DIM. C	DIM. D
007-01-7206	1461-20B	007-01-7207	1461-20C	20	3.50 (88.9)	3.63 (92.2)	4.00 (101.6)	4.24 (107.7)
007-01-7156	1461-15B	007-01-7157	1461-15C	15	2.62 (66.5)	2.75 (69.9)	3.13 (79.5)	3.37 (85.6)
007-01-7106	1461-10B	007-01-7107	1461-10C	10	1.750 (44.45)	1.875 (47.63)	2.250 (57.15)	2.49 (63.2)
007-01-7056	1461-5B	007-01-7057	1461-5C	5	.875 (22.23)	1.000 (25.40)	1.375 (34.93)	1.615 (41.02)

SPECIAL INK STAMPED HOUSINGS CHART						
BEFORE INK STAMP	AFTER INK STAMP	NO. CKTS.	CIRCUIT NUMERALS			
007-01-7106	1461-10B	10	11 THRU 20			
007-01-7107	1461-10C	10	21 THRU 30			
007-01-7156	1461-15B	15	16 THRU 30			
007-01-7157	1461-15C	15	31 THRU 45			
007-01-7106	1461-10B	10	46 THRU 60			
007-01-7206	1461-20B	20	21 THRU 40			
007-01-7207	1461-20C	20	41 THRU 60			
007-01-7208	1461-20-1C	20	61 THRU 80			

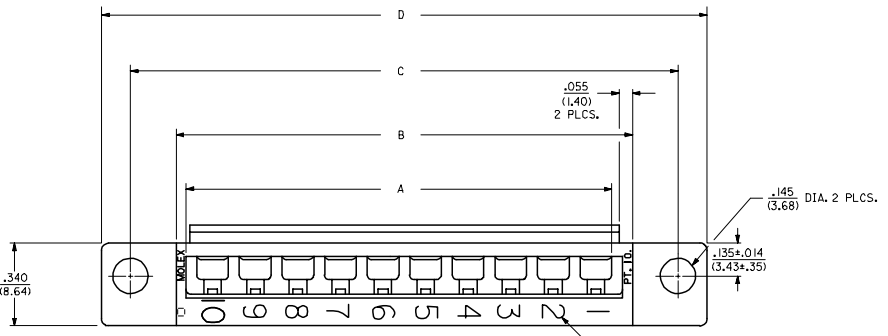
LINE	REV	DESCRIPTION	DATE	BY	CHKD
1		REVISIONS			
2		SEE SHEET 1			
3		REVISE DATE ON CND SYSTEM			
4		HOUSING, COMMUNING			
5		[025/1484] (OFF SHEET)			
6		DATE			
7		TIME			
8		BY			
9		CHKD			
10		DATE			
11		TIME			
12		BY			
13		CHKD			
14		DATE			
15		TIME			
16		BY			
17		CHKD			
18		DATE			
19		TIME			
20		BY			

HOUSING, COMMUNING  
 [025/1484] (OFF SHEET)  
 DATE: 1-20-61 1:02:35  
 TIME: 1:03:35  
 BY: [Signature]  
 CHKD: [Signature]  
 DATE: 1-20-61 1:02:35  
 TIME: 1:03:35  
 BY: [Signature]  
 CHKD: [Signature]

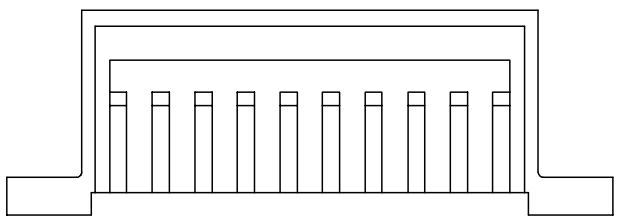
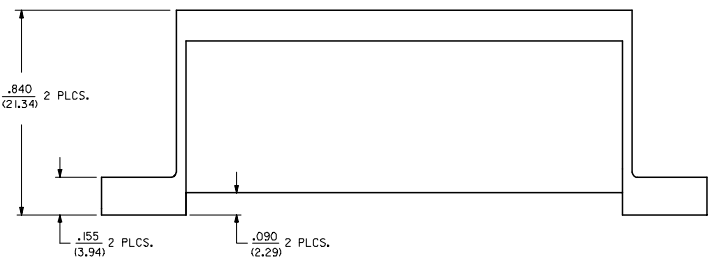
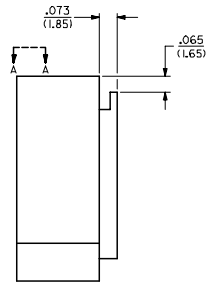
20 19 18 17 16 15 14 13 12 11 10 9 8 7 6 5 4 3 2 1

**NOTES:**

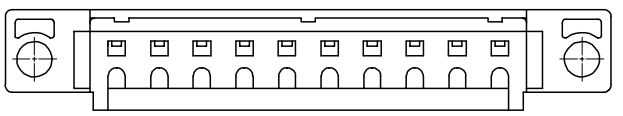
- △ THESE HOUSINGS ARE FOR USE WITH THE 1457-• TERMINALS AND MAY BE SUBDIVIDED BY USING THE 1461-K KEY.
- △ THE HOUSINGS ARE ONLY AVAILABLE IN 5, 10, 15, AND 20 CIRCUIT SIZES.
- △ PRODUCT SPECIFICATION PS 50-36 APPLIES.
- △ THESE HOUSINGS CONFORM TO U.L. AND C.S.A. REQUIREMENTS.
- △ .060/(1.52) HIGH RAISED NUMERALS.
- △ .125/(3.18) HIGH RECESSED NUMERALS ON A MATTE BACKGROUND.
- △ .09/(2.3) HIGH INK STAMPED NUMERALS.



VIEW A-A



**MATERIAL:**  
 POLYESTER, UNFILLED, 94V-0,  
 COLOR: BLACK,  
 (REF.: SMES 128C-1)



MODIFY COUR OUTS EC NO: UCP2005-2756 DRWNS: BARRA 2005/09/29 CHKD: BARKER 2005/10/18 APPR: SHILLER 2005/10/12	QUALITY SYMBOLS ▽=0 ▽=0	GENERAL TOLERANCES (UNLESS SPECIFIED)		DIMENSION STYLE IN/MM		SCALE 4:1	DESIGN UNITS INCH	THIRD ANGLE PROJECTION
		4 PLACES ± --- ± ---	3 PLACES ± --- ± .010	DRAWN BY AFG	DATE 95/12/18	TITLE HOUSING, COMMONING [.090/(2.29) OFFSET]		
		2 PLACES ± 0.25 ± .014	1 PLACE ± 0.35 ± ---	CHECKED BY RHR	DATE 95/12/18	MOLEX INCORPORATED		
		ANGULAR ±1/2°		APPROVED BY GWF	DATE 95/12/18	MATERIAL NO. SD-1461-* DOCUMENT NO. SD-1461-* SHEET NO. 3 OF 4		
DRAFT WHERE APPLICABLE MUST REMAIN WITHIN DIMENSIONS				SEE TABLE		THIS DRAWING CONTAINS INFORMATION THAT IS PROPRIETARY TO MOLEX INCORPORATED AND SHOULD NOT BE USED WITHOUT WRITTEN PERMISSION		

19 18 17 16 15 14 13 12 11 10 9 8 7 6 5 4 3 2 1